

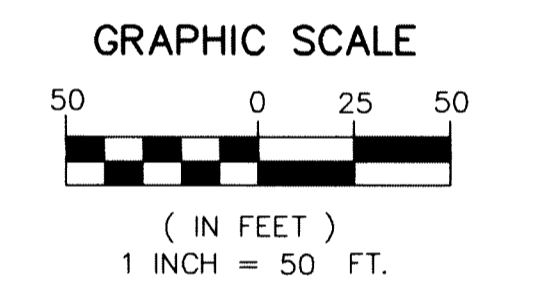
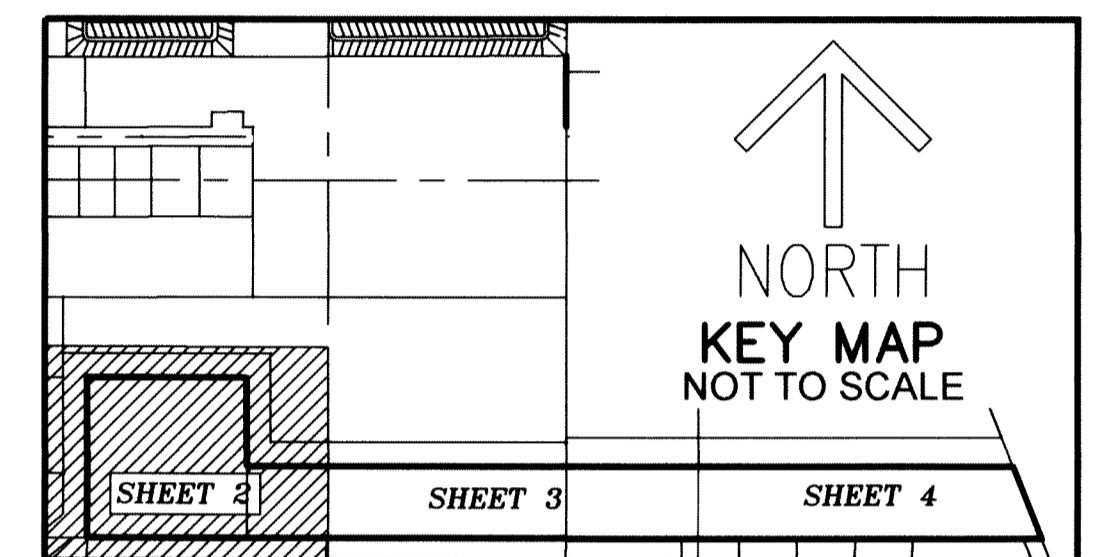
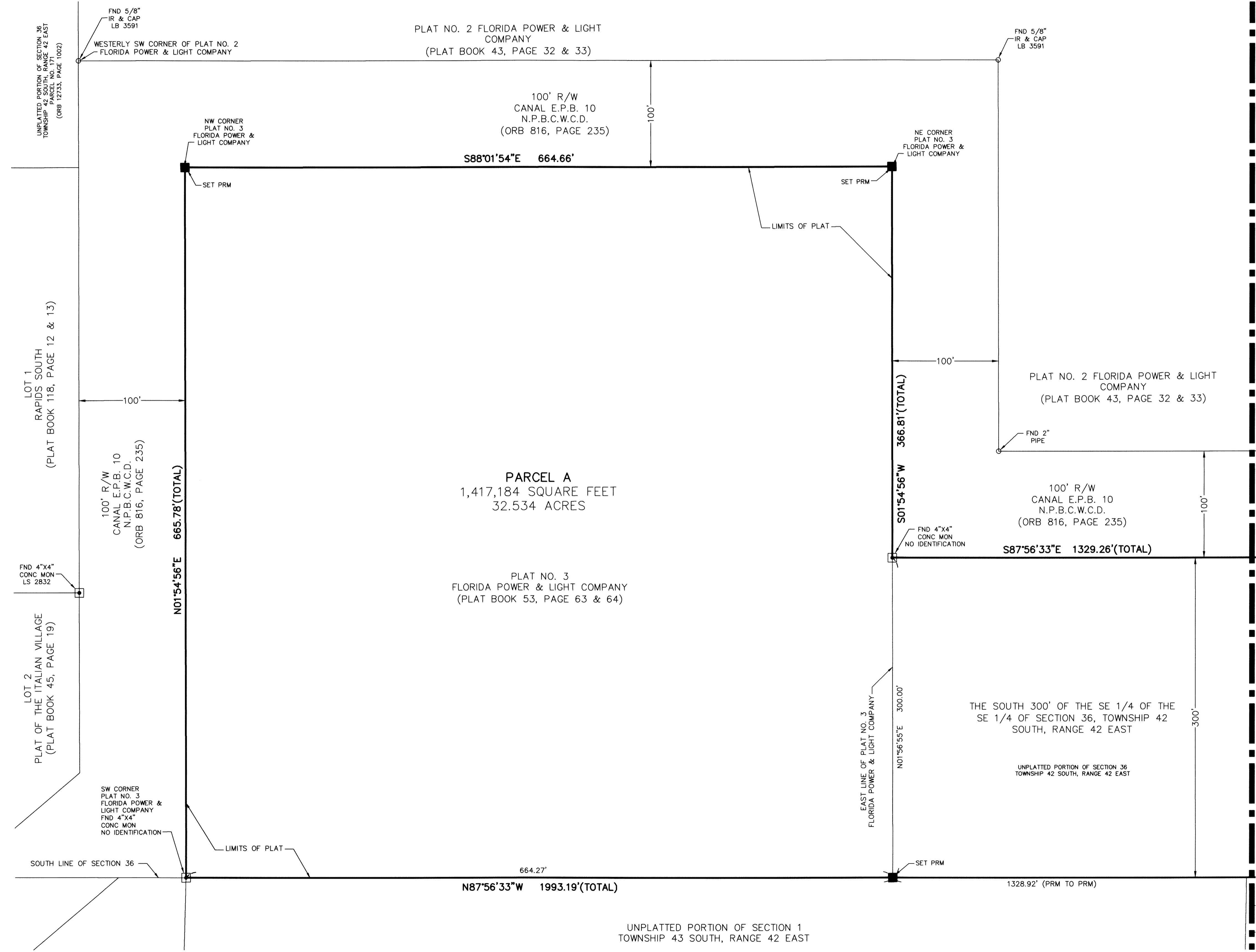
FPL PHYSICAL DISTRIBUTION CENTER (PDC) SOUTH

BEING A REPLAT OF ALL OF PLAT NO.3 FLORIDA POWER & LIGHT COMPANY, ACCORDING TO THE PLAT THEREOF AS RECORDED IN PLAT BOOK 53, PAGE 63 & 64, TOGETHER WITH A PORTION OF THE SOUTH 300' OF THE SOUTHEAST 1/4, OF THE SOUTHEAST 1/4 LYING IN SECTION 36, TOWNSHIP 42 SOUTH, RANGE 42 EAST, PALM BEACH COUNTY, FLORIDA. TOGETHER WITH A PORTION OF THE SOUTH 300 FEET OF THAT PART OF THE SW 1/4, LYING WEST OF STATE ROAD 9 IN SECTION 31, TOWNSHIP 42 SOUTH, RANGE 43 EAST, OF THE PUBLIC RECORDS OF PALM BEACH COUNTY, FLORIDA.
LYING IN THE CITY OF RIVIERA BEACH, PALM BEACH COUNTY, FLORIDA.

THIS INSTRUMENT PREPARED BY
RONNIE L. FURNISS
OF
CAULFIELD and WHEELER, INC.
SURVEYORS - ENGINEERS - PLANNERS
7900 GLADES ROAD, SUITE 100
BOCA RATON, FLORIDA 33434 - (561)392-1991
CERTIFICATE OF AUTHORIZATION NO. LB3591

156

SHEET 2 OF 4



LEGEND/ABBREVIATIONS

- ¢ - CENTERLINE
- CMC - CERTIFIED MUNICIPAL CLERK
- CONC - CONCRETE
- E.P.B. - EASTER PALM BEACH
- FND - FOUND
- FPL - FLORIDA POWER AND LIGHT COMPANY
- ID - IDENTIFICATION
- IR - IRON ROD
- LB - LICENSED BUSINESS
- LS - LICENSED SURVEYOR
- MON - SURVEY MONUMENT
- NO. - DENOTES NUMBER
- N.P.B.C.W.C.D. - NORTHERN PALM BEACH COUNTY WATER CONTROL DISTRICT
- ORB - OFFICIAL RECORD BOOK
- PB - PLAT BOOK
- P.E. - PROFESSIONAL ENGINEER
- PG - PAGE OR PAGES
- POB - POINT OF BEGINNING
- PRM - PERMANENT REFERENCE MONUMENT
- RLS - REGISTERED LAND SURVEYOR
- R/W - RIGHT-OF-WAY
- S.R. - STATE ROAD
- UE - UTILITY EASEMENT
- PRM - INDICATES SET 4" X 4" X 24" CONCRETE PERMANENT
- - SET FOUND PERMANENT REFERENCE MONUMENT 4" X 4" CONCRETE MONUMENT
- - DENOTES FOUND PERMANENT REFERENCE MONUMENT AS NOTED
- ✱ - INDICATES SECTION CORNER

MATCH LINE SHEET 3 OF 4